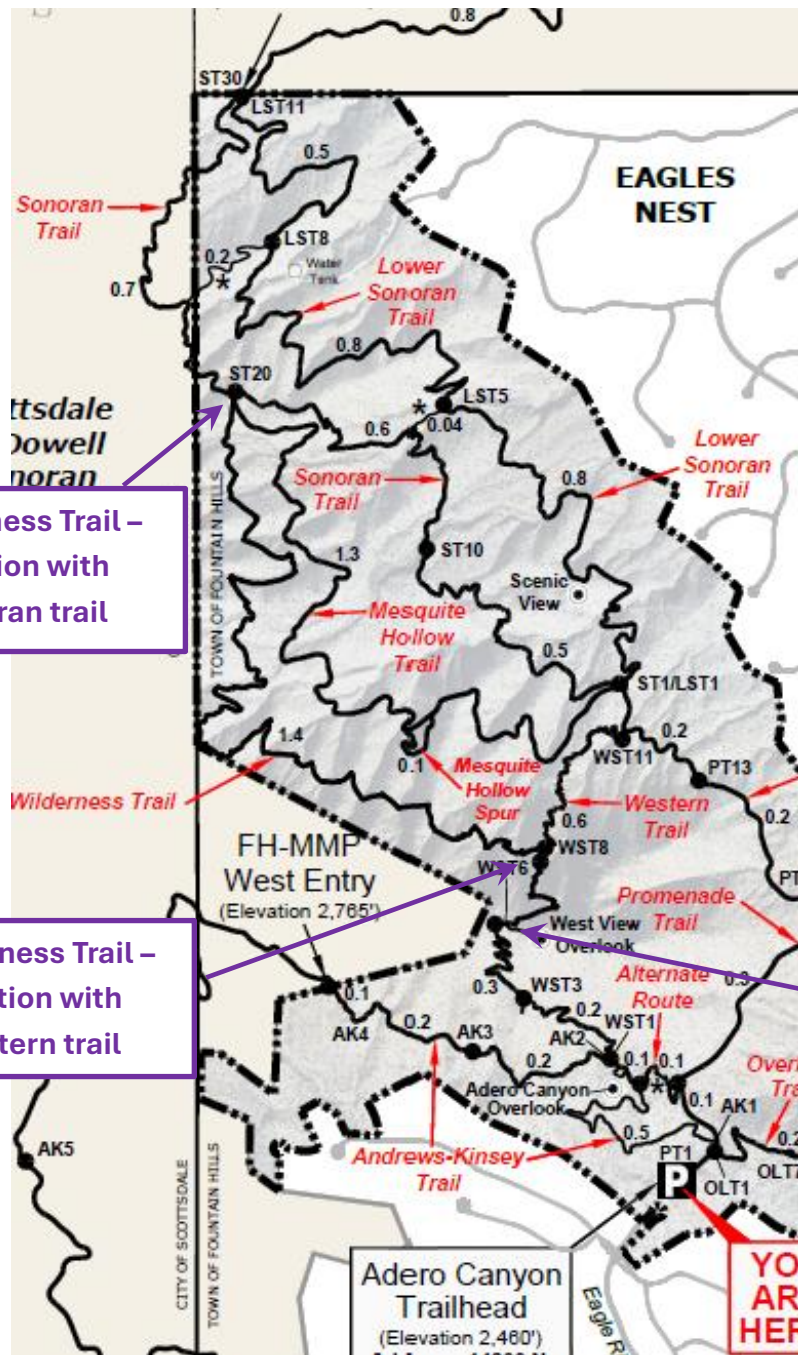


Wilderness Trail



Warning – Danger

The Wilderness Trail is a primitive, rocky trail. It is designed for experienced hikers familiar with hiking on narrow, uneven terrain.

Poles recommended

Wilderness Trail –
junction with
Sonoran trail

Wilderness Trail –
junction with
Western trail

Peak of Western trail

Wilderness Trail only: 1.8 miles, 390 feet cumulative elevation gain

Wilderness/Mesquite Hollow Hike (ACT to Western to Wilderness to Mesquite Hollow to ACT) : 5.4 miles, 950 feet cumulative elevation gain