

Connecting Trails, Fountain Hills, Scottsdale & McDowell Mountain Regional Park

Notice: This map is for general information purposes only. The Town of Fountain Hills does not warrant its accuracy, completeness, or suitability for any particular purpose. Trails, boundaries and other locations are approximate and subject to change. Copyright 2020 Town of Fountain Hills, Arizona. All rights reserved. NOT FOR RESALE.

Trail Guide

Trail Name	Length (mi)	Difficulty Rating
Andrews-Kinsey - (AK) (In FH-MMP)	0.5	◊
Andrews-Kinsey (In S-MSP)	2.0	◊
Dixie Mine (In MMRP)	0.6	◊
Easy - (ET)	0.1	●
Golden Eagle Trailhead to MMRP Bndy	0.6	○
Lower Ridgeline - (LRT)	1.0	■
Lower Sonoran - (LST)	2.1	■
North Leg - (NLT)	0.7	■
Overlook - (OLT)	0.6	■
Promenade - (PT)	0.8	■
Ridgeline - (RT)	1.7	◆
Sonoran - (ST) (In FH-MMP)	1.8	◆
Sonoran (In MMRP)	0.8	■
Western Bike Loop	0.5	■
Western Loop - (WL)	1.3	◆◆

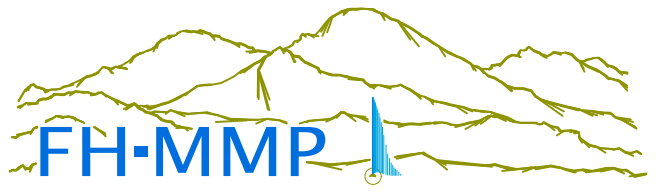
Rating Symbol

- Easiest
- Easy
- Moderate
- ◊ Moderately Difficult
- ◆ Difficult
- ◆◆ Extremely Difficult

Grade

Fountain Hills McDowell Mountain Preserve Trails

February 2023



Town of Fountain Hills
Community Services Department
480-816-5100
www.fh.az.gov/preserve



Welcome to Fountain Hills McDowell Mountain Preserve

The main Trailhead at Adero Canyon is at the end of Eagle Ridge Dr (14800 N Eagle Ridge Dr). The second Trailhead is at the end of Golden Eagle Blvd (14425 E Golden Eagle Blvd). There are facilities at both trailheads and signage that will guide you. Access the Dixie Mine Trail through Eagles Nest Community. There is a \$2 fee per person to enter the McDowell Mountain Regional Park.

Preserve Hours: SUNRISE to SUNSET

general rules

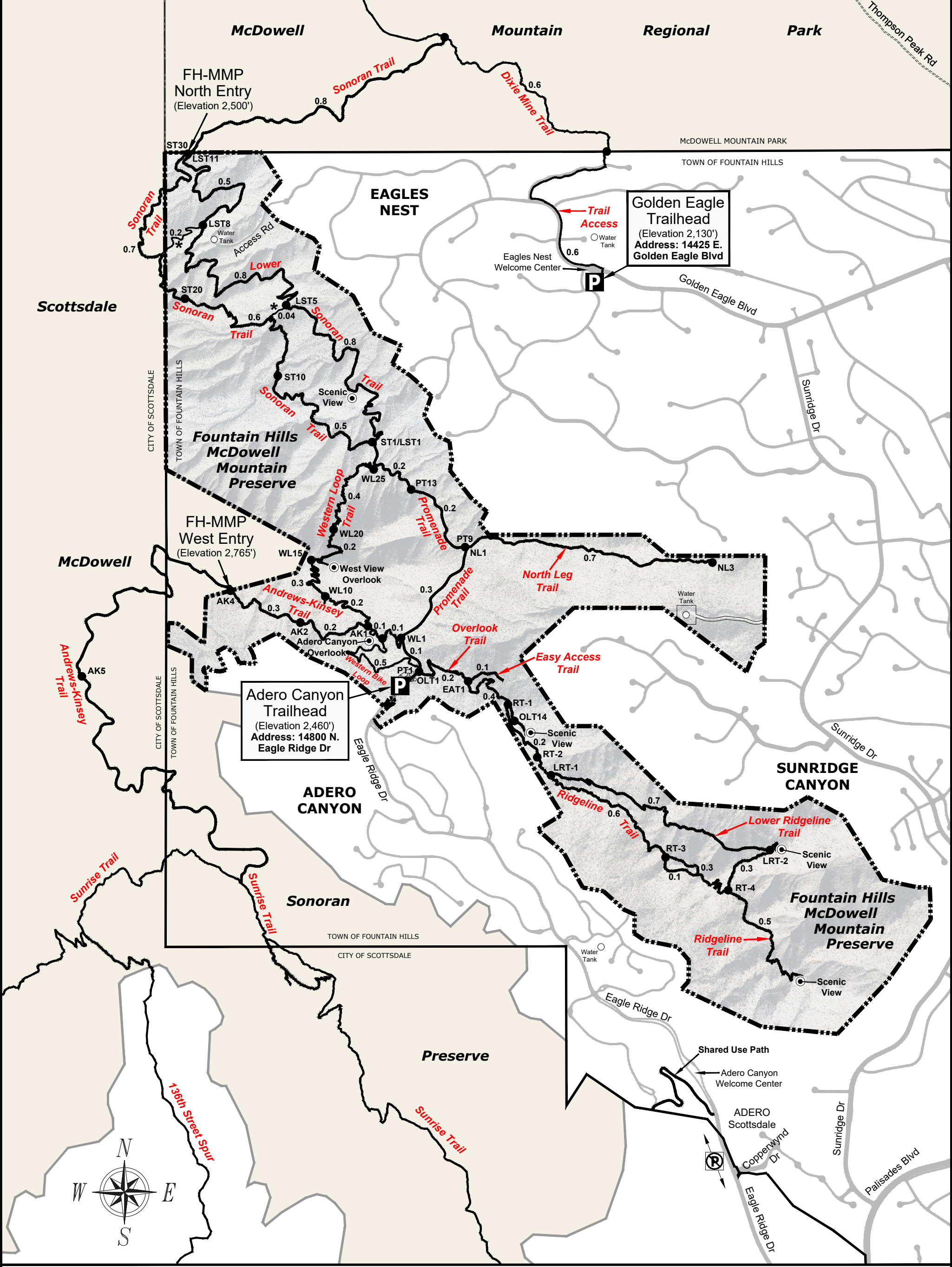
- Stay on designated and posted trails.
- No smoking, fireworks, or open flame.
- No motor vehicles except in designated parking areas.
- Dogs must be on a physical leash at all times, and owners must possess a waste container & immediately pick up all waste and deposit in a trash receptacle.
- Do not disturb wildlife or alter, deface, place or remove any materials, including rocks, animals or vegetation, alive or dead.
- No alcohol or glass containers.
- No horses.
- No hunting (excluding bow hunting per State regs), trapping or harming wildlife.

trail safety

- Bring ample water and a fully charged cell phone.
- Be aware of extreme heat:
 - Limit activity to the cooler parts of the day.
 - Wear light colored clothing, a hat, & sunscreen.
 - Leave your dog at home.
- Wear sturdy footwear.
- Tell a friend or family member where you are going and when you plan to return.
- Leave valuables at home or lock them out of view in your trunk.

trail etiquette

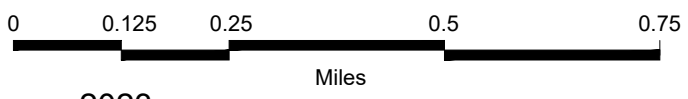
- Be considerate of other trail users - you are all here to enjoy the Preserve safely.
- Bicyclists should yield to all other users.
- Always travel at safe speeds.
- Do not use trails when wet or muddy.
- Sound travels far in the desert environment, so please speak quietly.



Trails of the Town of Fountain Hills McDowell Mountain Preserve

LEGEND:

- Trails
- Emergency Markers
- Parking
- Scenic Points
- Streets
- Trail Crossover or Link



Emergency markers are located on sign posts throughout the Preserve. If you need help, reference the nearest marker to assist emergency personnel in identifying your location.

Trail mileage is measured between emergency markers (●) and rounded to the nearest tenth of a mile.



Notice: This map is for general information purposes only. The Town of Fountain Hills does not warrant its accuracy, completeness, or suitability for any particular purpose. Trails, boundaries and other locations are approximate and subject to change. Copyright 2021 Town of Fountain Hills, Arizona. All rights reserved. NOT FOR RESALE.

